

610 ACO / 800 ACO

Crochet knitting machine for the production
of elastic and rigid narrow fabrics



610 ACO / 800 ACO

CROCHET KNITTING MACHINE WITH COMPOUND NEEDLES, FOR THE PRODUCTION OF A WIDE RANGE OF ORTHOPAEDIC AND TECHNICAL ARTICLES, BOTH ELASTIC AND RIGID

▲ GENERAL FEATURES

The machine is equipped with:

- 3-roller feeder for elastic threads
- Heddle bar for elastic threads
- Electronic speed variator INVERTER
- Warning light
- Work area safety device
- Chain links extension for up to 48 repeats
- Automatic tensioner for warp threads
- Weft device, controlled by eccentrics and 2 levers
- Digital revolution counter, 3 shift pick counter with preselection and hour meter
- Automatic stop motion for incorrect product winding onto the rollers
- Automatic stop motion for thread breaks or empty cones
- Standard supply package of consumables and accessories

▲ ADVANTAGES FOR USERS

The compound needle makes the machine highly versatile as it allows the processing in the warp – in addition to

classic synthetic yarns (polyester, polyamide) – of natural yarns (cotton, wool) and special fibres (aramid, fibreglass and, thanks to a special configuration, carbon fibre). The machine can use either COMEZ type or Jakob Müller type compound needles.

The machine is equipped with 8 weft bars controlled by chain links, composed of links presenting an involute profile, allowing for weft movements of up to 30 mm and guaranteeing high operating speeds and low noise emission levels. As an alternative, two bars can be driven by the weft device for weft movements of up to 50 mm.

▲ MAIN APPLICATION SECTORS

The machine offers a wide range of product options and applications such as:

- Medical and orthopaedic textiles (bodybelts, gauzes and bandages)
- Loop fasteners
- Articles for house cleaning
- Furnishing ribbons and tapes

▲ SPECIAL DESIGN ON REQUEST

The machine can be equipped with the supplementary warp tube bar (BPO/S) that can be used in several configurations:



- A second warp bar provides a lock-stitch effect on the fabric;
- In combination with the TED/V device, it allows the production of the loop fasteners;
- If the machine is equipped with a TED/V device and a double warp thread feeder, it allows different tensions between the warp threads forming the edge (without Astrakhan effect) and those on the central part of the ribbon (with Astrakhan effect).

The standard warp bar can be driven by special cams (TRICOT/S device) and, thanks to the compound needle, it is possible to obtain various knit constructions such as lock-stitch, double lock-stitch and many more.

On request, the machine can be fitted with a colour touch screen controller (DCF-C-M/C) which allows to:

- Visualize and vary the machine speed in r.p.m.;
- Set the sensitivity of the drop wire thread stop motion;
- Plan production (pick counter or production unit [m, kg, etc.]);
- Visualize the production by shift;
- Visualize automatically the reason of the machine stoppages;
- Visualize the machine time of running and stopping in hh:mm (hour counter).

ALTERNATIVE TECHNOLOGIES FOR CROCHET KNITTING WITH COMPOUND NEEDLES

▲ 800 ACO/EL

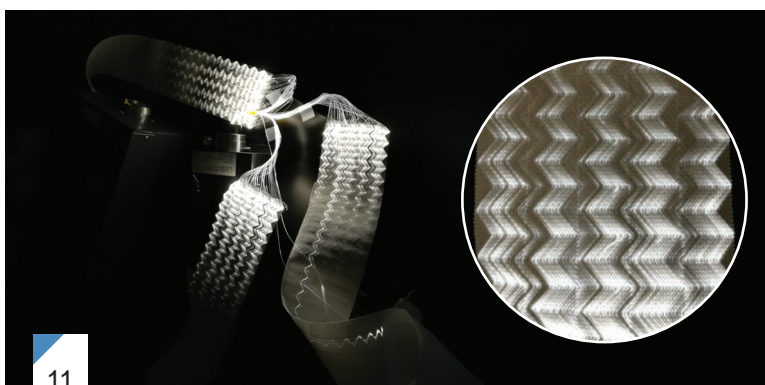
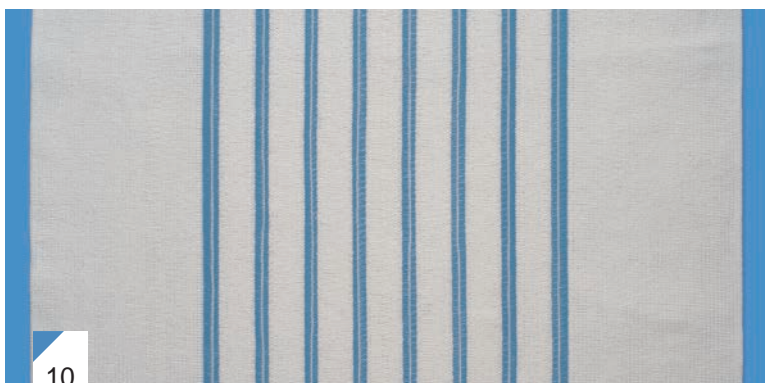
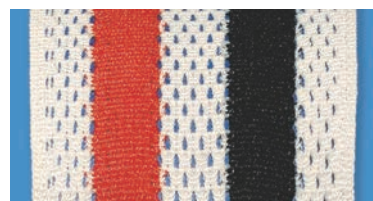
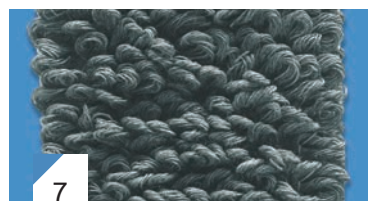
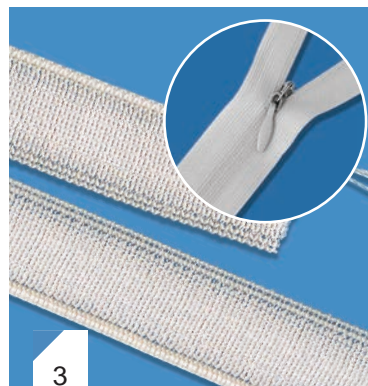
Crochet knitting machine with electronically controlled yarn tension and stitch density regulation for the production of narrow fabrics with lock-stitch structure

▲ ACOTRONIC

Electronic crochet knitting machine using compound needles for the production of ribbons, nets, technical and medical textiles

▲ PICTURES

- | | |
|------------------------------------|---|
| 1 610 ACO | 7-8 Fabrics for professional cleaning |
| 2 800 ACO | 9 Net |
| 3 Invisible zipper tape | 10 Orthopaedic band |
| 4 Loop fastener (Astrakhan effect) | 11 Fabric with the insertion of optic fibre |
| 5 Glassfibre | |
| 6 Mattress band | |



TECHNICAL SPECIFICATION

610 ACO / 800 ACO

Gauge					
610 ACO (n.p.i.)	10	12	14	15	20
610 ACO (n.p.cm.)	4			6	8
800 ACO (n.p.i.)	10	12	14	15	
Number of needle grooves on needle bed					
610 ACO	240	279	340	360	480
800 ACO	312	378	442	468	
Working width (mm)					
610 ACO	598	587	611	611	599
800 ACO	778	792	794	794	
Number of weft bars	8, controlled by chain links				
Needle type	compound needles (COMEZ or Jakob Müller)				
Stitch density	2 - 11 (only 800 ACO) or 5 - 25 stitches/cm				
Repeat length	12 - 48				
Electrical supply mains	200 - 240 / 380 - 440 V, AC, 3-phase + earth				
Main motor power	1.5 kw				
Installed power	1.7 kVa				

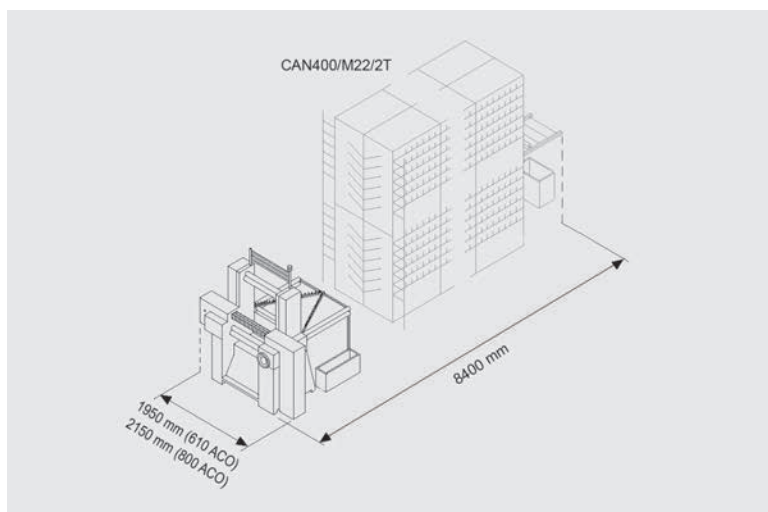
▲ DIMENSIONS

610 ACO

Width: 1950 mm
Depth: 900 mm
Height: 2200 mm
Net weight: 615 Kg

800 ACO

Width: 2150 mm
Depth: 900 mm
Height: 2200 mm
Net weight: 640 Kg



Copyright © 2019 by Comez International s.r.l., a member of Jakob Müller Group
27024 Cilavegna Italy

Printed in Italy. All rights reserved.

No part of this publication may be reproduced by any means, nor translated, nor transmitted into a machine language without the written permission of the publishers.

This leaflet contains photos and technical data for information only, without contractually engagement. Subject to change without notice.



Rep.:



Comez International s.r.l.
27024 Cilavegna Italy
Tel +39 0381 698611
Fax + 39 0381 698698
info@comez.com
www.comez.com